

Rescue equipment

Holmatro

Special Materials Cutter
SMC 4006 (C)





The Holmatro SMC 4006 has been specially developed to cut hard and solid materials such as padlocks, chains and re-bar. These are materials regular hydraulic rescue cutters have difficulty with or cannot cut at all, while risking serious damage to the blades. The blade and jaw design of the SMC 4006, however, specifically lends itself to cutting materials of high hardness. Thanks to its compactness, low weight and adjustable rotating carrying handle, Holmatro's 'Special Materials Cutter' is also very suitable for use in difficult to reach areas and confined spaces.

Two versions, both traditional dual hose (SMC 4006) and single hose CORE™ (SMC 4006 C), are available. These double-acting cutters can be operated by using any pump unit from the Holmatro Rescue Equipment range.



Holmatro SMC 4006 C.



Chain cutting.



Padlock cutting.



Re-bar cutting.



Features & Benefits



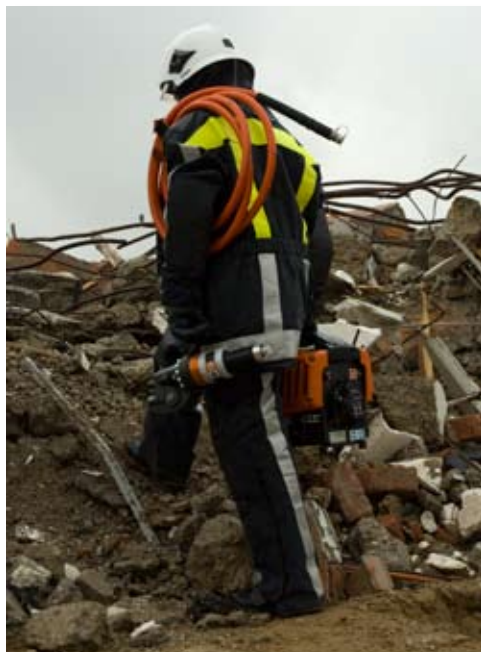
- Special blade and jaw design
 - Designed to cut solid materials of high hardness, such as padlocks, chains and re-bar. These are materials regular rescue cutters cannot cut, at least not without risking serious damage to blades.
 - Able to cut materials far exceeding the EN 13204 norm in terms of hardness
 - Blades are easy to change
- Lightweight
 - Easy to carry, also to difficult to reach areas
- Compact
 - Suitable for use in confined spaces
- Adjustable rotating carrying handle
 - Simplifies cutting at various angles
 - For easy positioning in confined spaces
- Complementary to existing Holmatro rescue systems
 - Can be operated by any double-acting Holmatro pump unit



Re-bar, chain and padlock cut by Holmatro's Special Materials Cutter.



Compact design for use in confined spaces.





Easy to carry, also over rough terrain.








Rotating carrying handle can be easily adjusted.

Specifications



	SMC 4006 C	SMC 4006
		
Article number	150.012.189	150.012.195
Equipped with	CORE™ Technology	dual hoses
Working pressure	720 bar	720 bar
Blade opening	25 mm	25 mm
Cutting force	193 kN / 19.7 t	193 kN / 19.7 t
Weight, ready for use	6.5 kg	7.6 kg
Dimensions (L x W x H)	389 x 114 x 234 mm	424 x 114 x 234 mm

Cutting performance

Application	Materials according to EN 13204; S235	Materials exceeding EN13204 in terms of hardness
 Re-bar  Padlock  Chain	 130 100 75 50 25 0	 68 60 50 40 30 22 ← Ø 8.5 mm / 60 HRc ← Ø 12 mm / 49 HRc ← Ø 16 mm / 28 HRc 100 HRb = 22 HRc



Holmatro N.V.

World Headquarters
Raamsdonksveer, The Netherlands



Holmatro Rescue Equipment B.V.

Raamsdonksveer, The Netherlands
T +31 (0)162 58 92 00
E info@holmatro.com
Manufacturing, sales & service



Holmatro, Inc.

Glen Burnie, MD, U.S.A.
Manufacturing, sales & service



Holmatro China

Shanghai, China
Sales & service



Holmatro Polska Sp. z o.o.

Warsaw, Poland
Manufacturing, sales & service

www.holmatro.com

©Holmatro® 0708.01 980.000.213

Disclaimer

While the greatest care has been devoted to the content, it is possible that the information in this printed matter is incorrect or incomplete. Holmatro N.V. and its affiliated companies (hereafter: Holmatro) cannot be held liable in any way for the consequences of activities undertaken on the basis of this printed matter. If you have any doubts about the correctness or completeness of the information, you shall contact Holmatro (phone number: +31 (0)162-589200). Nothing from this printed matter can be copied and/or made public in any way without the explicit authorisation of Holmatro.